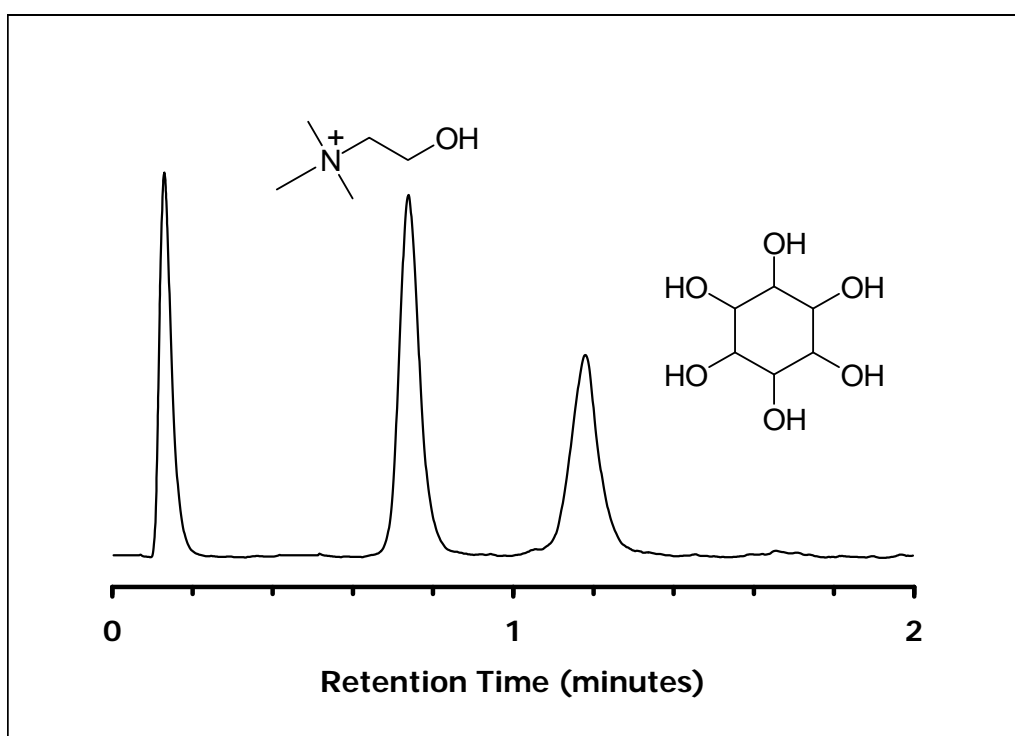


ZIC[®]-HILIC Separation of Choline and Inositol

Chromatographic Conditions

Column: ZIC[®]-HILIC, PEEK 20 x 2.1 mm, 3.5 μm, 100 Å (P/N 2701-022)
 Injection: 2 μL in mobile phase
 Detection: ELSD @ 60 degrees Celcius, 4.0 bar compressed air and Gain 11
 Pressure Drop: 5.5 MPa (792 psi)
 Flow Rate: 0.5 mL/min
 Mobile Phase (v/v): 80%, Acetonitrile
 20%, Ammonium Acetate 100 mM; pH 4.5
 Overall ionic strength: 20 mM



Chromatographic Data

No.	Compound	Time (min)	Retention factor	Assymetry
1	void volume (t ₀)	0.1	-	-
2	Choline 25 μg/mL	0.7	4.7	1.27
3	Inositol 25 μg/mL	1.2	8.1	1.05

XLogP (inositol): -2.7