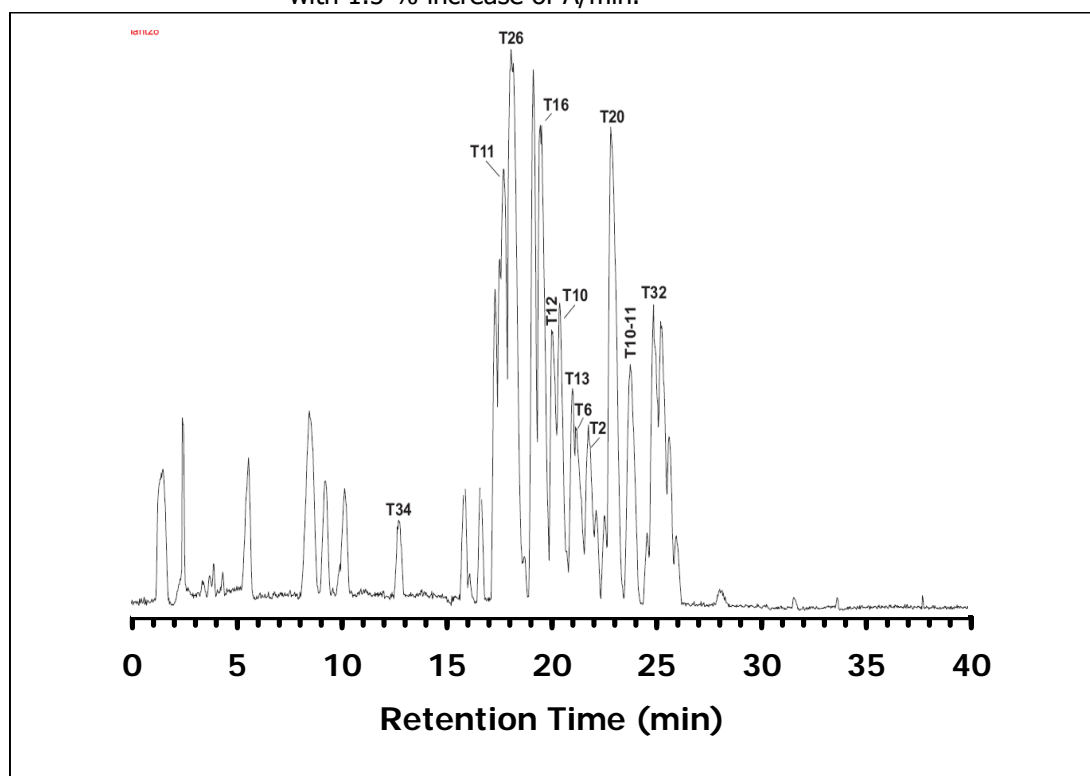


## ZIC®-HILIC Separation of tryptic peptides from Ovalbumin

### Chromatographic Conditions

- Column: ZIC®-HILIC, PEEK 150 x 0.3 mm, 5 µm, 200 Å (P/N 1.50481.0001)  
 Injection: 1 µL of 10 pmole digested sample injected in mobile phase  
 Detection: MicroMass Ultima-QTOF, Needle voltage: 3.1 kV, Cone voltage: 45V  
 collision energy: 10V; Scan range: m/z 400-1800; 1.5 s cycle time  
 Flow Rate: 5 µL/min  
 Mobile Phase (v/v): A: 100% Milli-Q water with a 0.25% formic acid (FA)  
 B: 100% Acetonitrile with 0.25% formic acid (FA)  
 Gradient: Initial composition: 90% B and 10% A. Linear gradient from 0-40 min  
 with 1.5 % increase of A/min.



### Chromatographic Data

No.	Fragment	Sequence	Time (min)
1	T34	(R)ZVSP(-)	
2	T11	(R)YPILPEYLQZVK(E)	18.2
3	T26	(K)VYLPR(M)	18.6
4	T16	(K)GLWEK(A)	
5	T12	(K)ELYR(G)	
6	T10	(R)LYAEER(Y)	
7	T20	(R)VASMASEK(M)	
8	T32	(R)ADHPFLFZ1K(H)	25.9

Source: Swissprot P01012; Mods: Cys-CAM; printed: Thu Jun 09, 2005

Average Mass = 43092.5050, Monoisotopic Mass = 43064.5911; N-Terminus = H, C-Terminus = OH

Modified amino acids: CAM(Z) = CAM Cysteine; Digest: Trypsin:/K-\P /R-\P