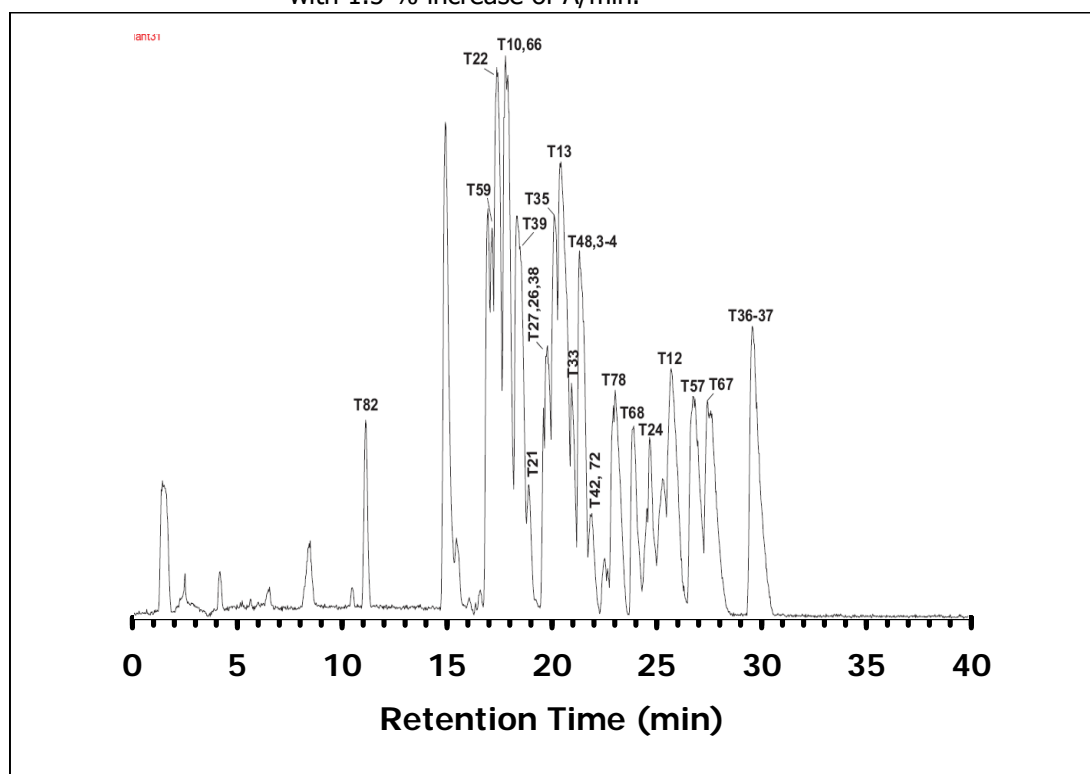


ZIC®-HILIC Separation of tryptic peptides from BSA (cow)

Chromatographic Conditions

- Column: ZIC®-HILIC, PEEK 150 x 0.3 mm, 5 µm, 200 Å (P/N 1.50481.0001)
 Injection: 1 µL of 10 pmole digested sample injected in mobile phase
 Detection: MicroMass Ultima-QTOF, Needle voltage: 3.1 kV, Cone voltage: 45V
 collision energy: 10V; Scan range: m/z 400-1800; 1.5 s cycle time
 Flow Rate: 5 µL/min
 Mobile Phase (v/v): A: 100% Milli-Q water with a 0.25% formic acid (FA)
 B: 100% Acetonitrile with 0.25% formic acid (FA)
 Gradient: Initial composition: 90% B and 10% A. Linear gradient from 0-40 min
 with 1.5 % increase of A/min.



Chromatographic Data

No.	Fragment	Sequence	Time (min)
1	T82	(K)LVWSTQTALA(-)	
2	T22	(K)YLYEIAR(R)	18.0
3	T39	(K)LVTDLTK(V)	
4	T13	(K)VASLR(E)	
5	T78	(K)ATEEQLK(T)	
6	T68	(K)TPVSEK(V)	24.5
7	T24	(R)HPYFYAPPELLYANK(Y)	
8	T12	(K)SLHTLFGDELZK(V)	26.1

Source: Swissprot P01012; Mods: C-CAM; printed: Thu Jun 09, 2005

Average Mass = 71290.5016, Monoisotopic Mass = 71244.1902 : N-Terminus = H, C-Terminus = OH

Modified amino acids: CAM(Z) = CAM Cysteine; Digest: Trypsin:/K-\P /R-\P