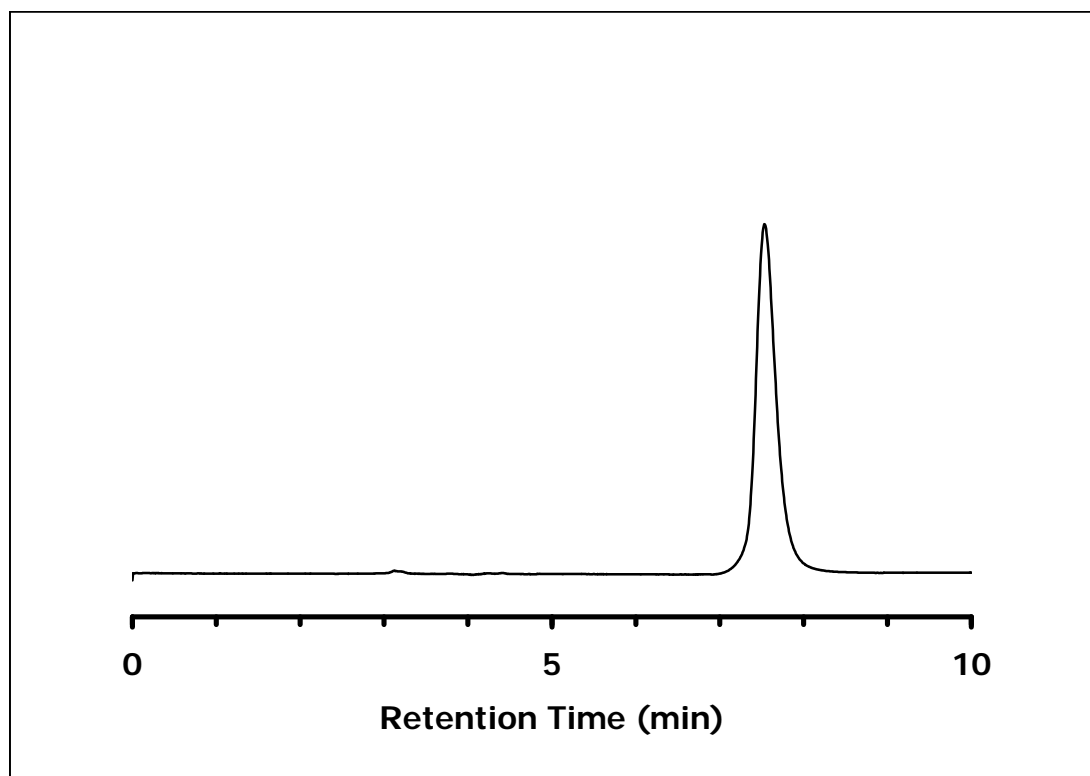


ZIC®-HILIC Separation of Gly-His-Lys

Chromatographic Conditions

Column: ZIC®-HILIC, PEEK 150 x 4.6 mm, 5 µm (P/N 1.50455.0001)
Injection: 2 µL of a 0.2 mg/ml standard solution in mobile phase
Detection: UV @ 214 nm (UFS 1.0 V)
Flow Rate: 0.5 mL/min
Mobile Phase (v/v): 40%, Acetonitrile
60%, Ammonium formate 100 mM, pH 6.2
(overall ionic strength: 60 mM)



Chromatographic Data

No.	Compound	Time (min)	Retention factor
	t_0 void volume	3,0	-
1	Gly-His-Lys	7,5	1,5