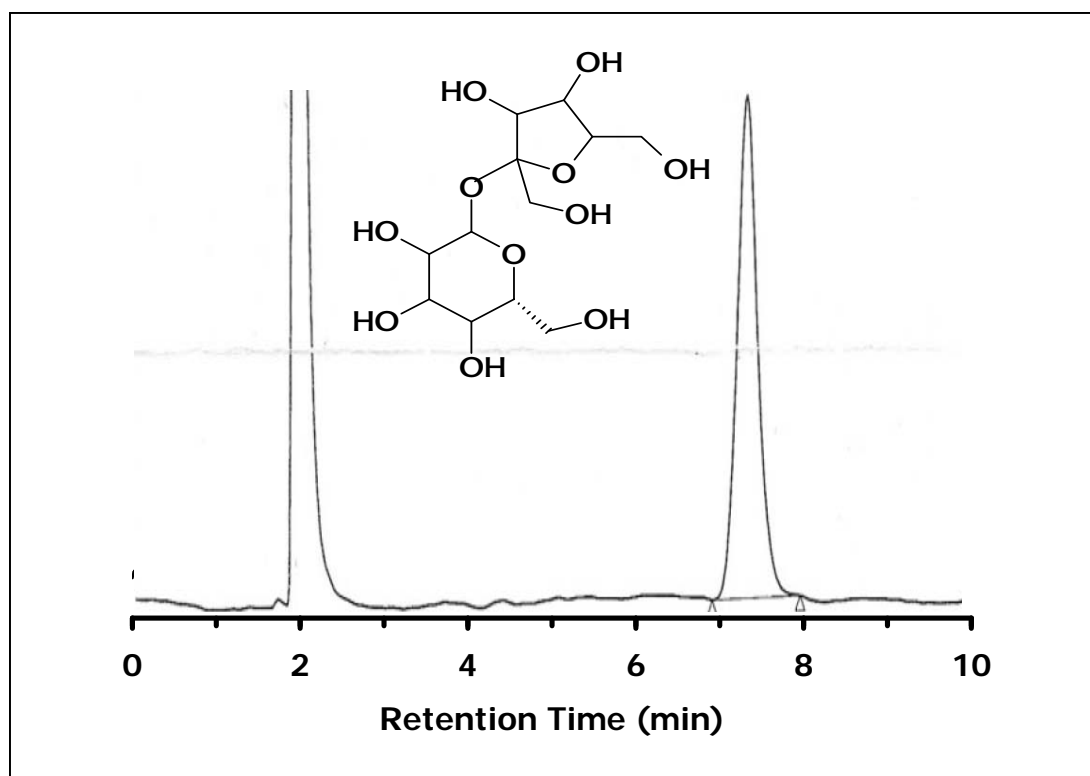


ZIC® -HILIC Separation of Sucrose with RI detection

Chromatographic Conditions

Column: ZIC®-HILIC, PEEK 150 x 4.6 mm, 5 µm, 200A (P/N 1.50455.0001)
Injection: 20 µL of a 100 ppm solution in mobile phase
Detection: RI detection
Flow Rate: 1.0 mL/min
Mobile Phase (v/v): 80%, Acetonitrile
20%, Ammonium Acetate 25 mM, pH 6.8
 $I_{\text{tot}} = 5 \text{ mM}$
Temperature: ambient



Chromatographic Data

No.	Compound	Concentration (ppm)	Time (min)	Retention factor	Asymmetry
1	void volume (t ₀)		2,0	-	-
2	Fructose	100	7,4	2,7	1,1

Data provided by Gora Sharangi, Merck Specialities Pvt. Ltd, India.
For more details, contact chromatography@merck.co.in