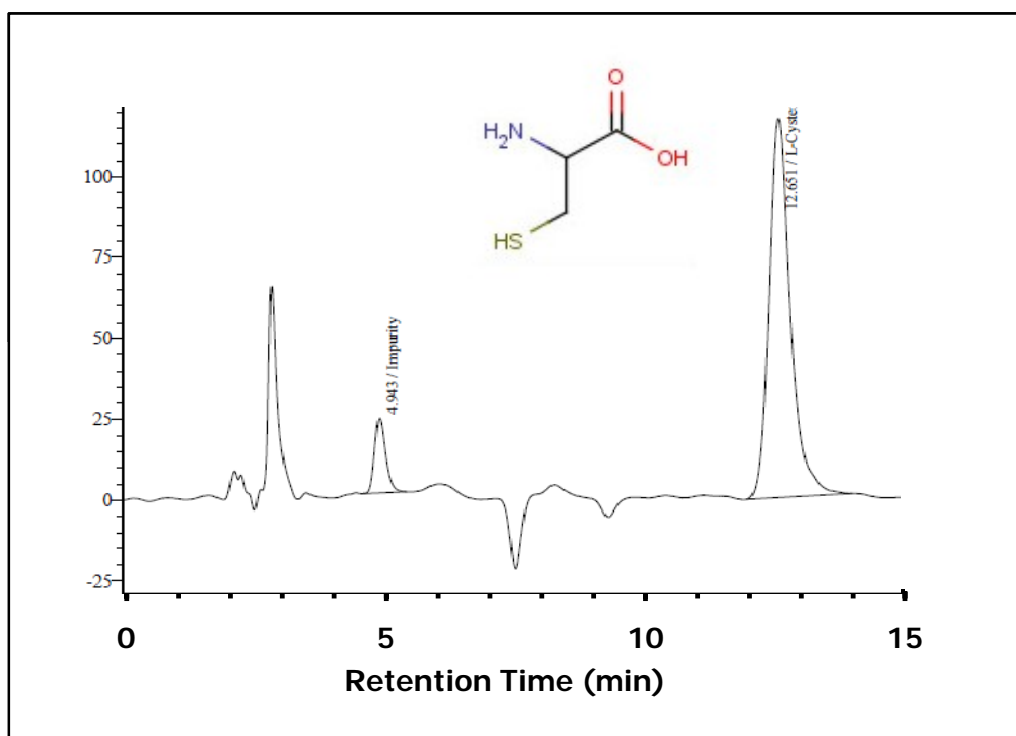


ZIC®-HILIC Separation of L-Cysteine

Chromatographic Conditions

Column: ZIC®-HILIC, PEEK 100 x 4.6 mm, 5 µm, 200 Å (P/N 150453)
 Injection: 25 µL of a 300 ppm solution diluted in mobile phase
 Detection: UV @ 220 nm (UFS 1.0 V)
 Column Temperature: Ambient
 Flow Rate: 0.5 mL/min
 Mobile Phase (v/v): 80%, Acetonitrile
 20%, Ammonium Acetate 50 mM, pH 6.8
 (total ionic strength: 10 mM)



Chromatographic Data

No.	Compound	Time (min)	Retention factor
	t_0 void volume	2.0	-
1	L-Cysteine (Log P: -2.5)	12.7	5.3

Data provided by Gora Sharangi, Merck Specialities Pvt. Ltd, India.
 For more details, contact chromatography@merck.co.in